

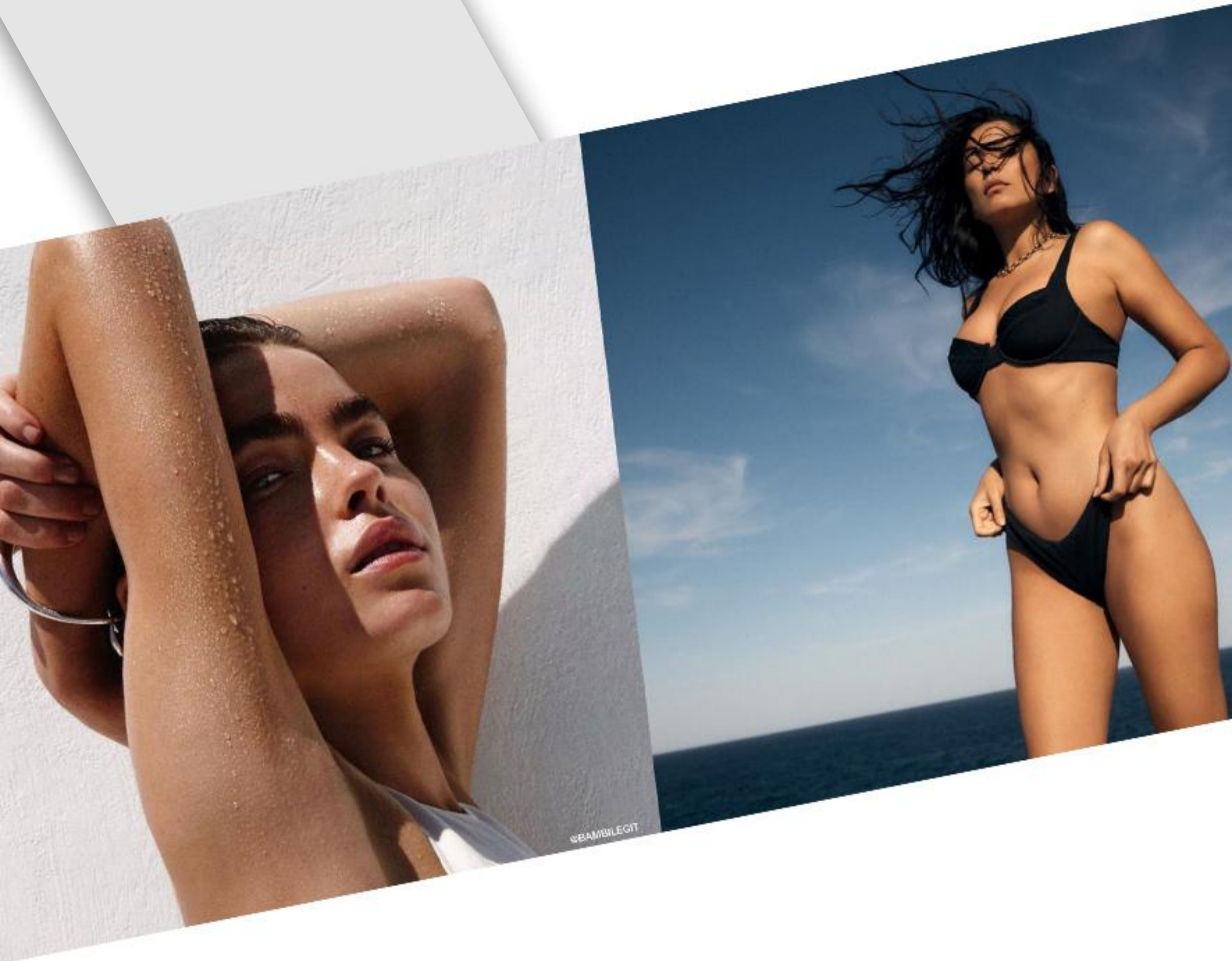
4D TECLASER

755nm&810nm&940nm&1064nm

DIODE LASER HAIR REMOVAL SYSTEM

STRONGER
FASTER
ICE COOLING





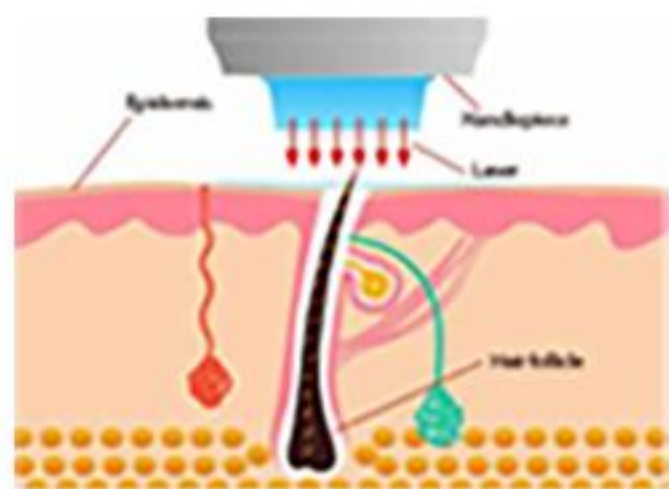
4D TECLASER Diode Laser System

The most advanced diode laser hair removal system that combines 4 wavelengths to permanently and safely remove any type of hair on all skin types.

The high energy density and advanced cooling system, treatments are now much faster and pain free. The device leverages the benefits of 4 combined wavelengths 755nm & 810nm & 940nm & 1064nm, with an improved patient experience and a business-oriented approach, creating a new solution in the world of professional hair removal.



TECHNOLOGIES BEHIND



4D TECLASER hair removal System, adopts the light selective absorption theory, heating the hair shaft and hair follicle to destroy the hair follicle and oxygen organization around hair follicle, there by to get the permanent hair removal purpose. The patent Pulse Width to Energy 1:1 working mode, makes the energy penetrating more effective, less thermal destroy to the surrounding tissue, meanwhile the stable anti-ice cooling technology protects skin from burny finally getting a wonderful result.

Advanced Technology for
Superior Results.



755NM

755nm wavelength improves the absorption of powerful energy by the melanin chromophore, making it ideal for the most extensive range of hair colors and types, especially light-colored and thin hair.

808NM

808nm is a classic hair removal wavelength, offering deep penetration of the hair follicle with high average power, and fit for all skin types and hair colors.

940NM

940nm coagulates the microvessels around the hair follicle, cutting off the nutrient supply of hair follicles, sharply reducing hair regeneration power, and completely inhibiting hair regeneration.

1064NM

1064nm wavelength is characterized by lower melanin absorption, making it a perfect solution for darker skin types. 1064nm also offers the deepest penetration of the hair follicle, so that it targets the Bulb and Papilla, while deeply treating embedded hair in areas such as the scalp, armpits and pubic areas.

APPLICATOR



4 Wavelength 755NM + 810NM + 940NM + 1064NM

Safe and effective for all skin types.

1600W Laser Bar Power

High efficiency, significantly cutting treatment times and ensuring a more comfortable experience for patients.

Large Spot Size 12*20MM

Make treatments much faster and pain free,

Facial Tip (optional)

Easily treat areas that are normally hard to reach, including the ears, nostrils and glabella.

TECHNICAL HIGHLIGHTS

1 Continuous contact cooling



Advanced continuous contact cooling technology that continuously cools skin throughout the whole treatment. The cold sapphire tip minimizes epidermal risks while maintaining heat within the dermis where hair follicles are treated. Patients can now enjoy a completely pain-free, cool and comfortable experience throughout the session.



2 Intelligent Protection System

Intelligent protection system. High security for patients, operator and machine.

3 Intuitive and user-friendly interface.

Customized for male and female.
For all skin types **I - VI**.
5 cooling levels adjustable.
Multi languages menu.



4 Smart LED screen on applicator.

Parameters can be set by LED screen on applicator freely



SPECIFICATIONS

Laser type	Diode Laser
Laser bars power	1600W (160w x 10pcs)
Laser wavelength	755nm + 808nm + 940nm + 1064nm
Display	15" Color Touch LCD Display
Output power	2500W
Spot size	12x 20 mm
Pulse width	2-150ms adjustable
Energy	2-100 J / cm ² adjustable
Frequency	1-10 Hz
Cooling mode	Close-cycle water cooling
Cooling	Water + air + semiconductor
Temperature of probe	0~3° C
Dimension of machine	50*45*110cm
Dimension of package	67*63*123cm
Net weight	57 kgs
Gross weight	81 kgs
Voltage	AC 220V/50Hz
Packing	Aluminum alloy case

